

2023



NATIVE WATERCRAFT



BONAFIDE KAYAKS



LIQUIDLOGIC KAYAKS



HURRICANE AQUASPORTS

ELEMENT²

PRODUCT CATALOG
DEALER WORKBOOK

A man wearing a black cap, sunglasses, and a fishing vest is sitting in a boat, holding a large fish. The boat has "NATIVE WATERCRAFT" written on its side. In the background, there are trees and a clear sky. A large, stylized yellow and white graphic of a fish is in the top left corner.

NATIVE WATERCRAFT

JORDAN LEE
2 x Bassmaster Classic Champion
Team Native Watercraft Member

"FISHING IS GOOD HERE"

NATIVE
WATERCRAFT

propel[™]
pedal drive

HANDS FREE
— FORWARD TO REVERSE —

701 SERIES 10:1 GEAR RATIO **INTEGRATED WEED GUARD** TOUGH, MARINE GRADE
ANTI-SLIP PEDALS WITH REMOVABLE HEX TRACTION PINS **ANODIZED ALUMINUM**



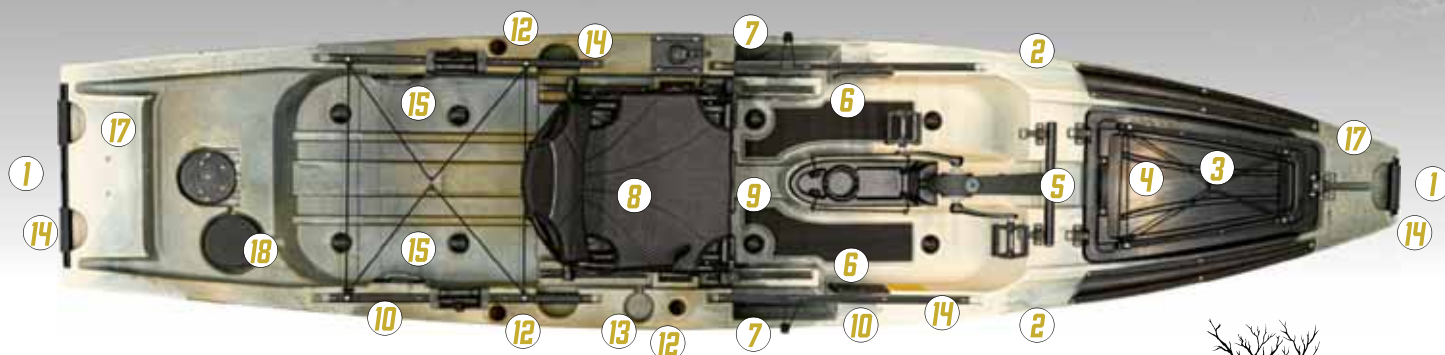
MADE IN THE USA 
FROM DOMESTIC AND FOREIGN PARTS

**5 YEAR
WARRANTY
ON PROPEL
DRIVES**

Patent # 9725149

NEW

SLAYER^{MAX} propel^{12.5}



SPRINGBLADE
RUDDER SYSTEM

SHOWN IN:
HIDDEN OAK



NEW

GATOR GREEN

HIDDEN OAK

GREY GOOSE

COMPATIBLE WITH:
SIDEKICK
ONBOARD WHEEL SYSTEM

propel
pedal drive

LENGTH: 12.5'

WIDTH: 34"

DEPTH: 13"

FITTED WEIGHT: 95 LBS

RIGGED WEIGHT: 125 LBS

1ST CLASS FRAME SEAT

- | | | | |
|--------------------------------------|------------------------------------|--|-------------------------------------|
| 1 BOW AND STERN MOUNTING | 6 DUAL ELECTRONICS PANELS | 10 GROOVE TRACK FOR ACCESSORIES | 15 SPLIT PADDLE STORAGE |
| 2 DUAL HORIZONTAL ROD STORAGE | 7 DUAL SIDE TACKLE STORAGE | 11 SPRINGBLADE RUDDER SYSTEM | 16 TRANSDUCER MOUNTING PLATE |
| 3 ROTOMOLDED BOW HATCH | 8 HAND SEWN SEAT COVER | 12 3 MOLDED IN ROD HOLDERS | 17 POWER POLE READY |
| 4 BATTERY STORAGE | 9 UNDER SEAT STORAGE DRAWER | 13 MOLDED IN CUP HOLDER | 18 STERN INTERNAL ACCESS |
| 5 TRANSDUCER SCUPPER | | 14 BMX STYLE GRIPS | 19 4 STERN TANKWELL SCUPPERS |

CAPACITY: 500 LBS



FALCON 11



FEATURE RICH MEANS HI-LO FRAME SEATING, CONSOLE WITH BATTERY AND TRANSDUCER SCUPPER ACCESS, STAND UP PADS, AMPLE GROOVE TRACK, FLUSH MOUNTED ROD HOLDERS, AND TAG ALONG WHEEL.

THE TAG ALONG WHEEL IS INCLUDED!



SHARK BLUE

ORANGE

GREY

LENGTH: 11'

WIDTH: 32.5"

DEPTH: 15.84"

FULLY RIGGED WEIGHT: 65 LBS

HI-LO FRAMED SEAT

CAPACITY: 325 LBS

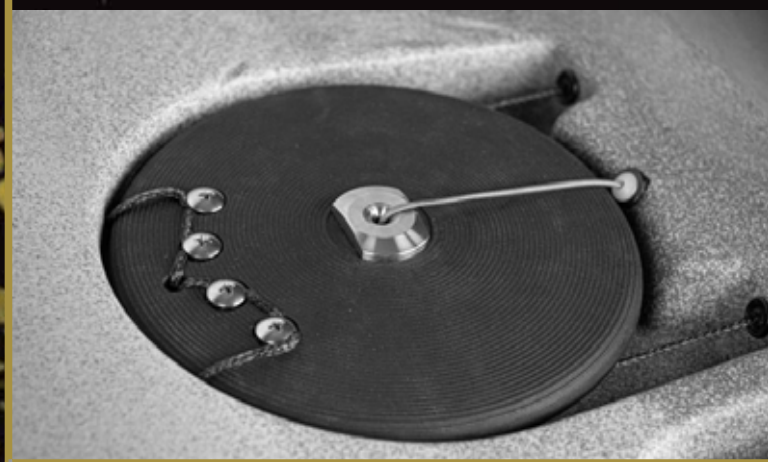
THE NATIVE WATERCRAFT FALCON 11 IS A FEATURE RICH, A SUPER STABLE, COMPACT FISHING MACHINE AT A PRICE POINT THAT'S HARD TO BEAT, ESPECIALLY WHEN THE COOLER IS PACKED WITH A FRESH CATCH. AT 11' LONG AND 32.5" WIDE, THE FALCON 11 SLIDES THROUGH THE WATER WITH EXCELLENT TRACKING AND AMPLE STABILITY.



NATIVE WATERCRAFT



SPRINGBLADE RUDDER SYSTEM



NEW

**WILL BE INCLUDED ON STOCK
SLAYER MAX AND TITAN MODELS**



- ▶ **INCREASED TRACKING AND PERFORMANCE**
- ▶ **SPRING LOADED BLADE**
- ▶ **TIGHTER TURNING RADIUS**
- ▶ **ENHANCED TURNING CAPABILITIES
IN HARSH CONDITIONS**
- ▶ **IMPROVED TENSION LOCK FOR STEERING CABLES**
- ▶ **EASILY STOWS AND DEPLOYS FROM YOUR SEAT**

SPECIFICATIONS

SKU

3" RUDDER SHAFT ARUD600S

5" RUDDER SHAFT ARUD600L



PROPEL

TITAN propel



*Titan 12 in Gator Green



GATOR GREEN



HIDDEN OAK



GREY GOOSE

STABILITY
SERIES

SPRINGBLADE
RUDDER SYSTEM

COMPATIBLE WITH:
SIDEKICK
ONBOARD WHEEL SYSTEM



SPECIFICATIONS	LENGTH	WIDTH	DEPTH	FITTED HULL	FULLY RIGGED	CAPACITY	OUTFITTING
TITAN 10.5	10'9"	37.5"	13"	97 LBS.	121 LBS.	500 LBS.	1ST CLASS SEAT
TITAN 12	12'	39"	13"	109 LBS.	138 LBS.	500 LBS.	1ST CLASS SEAT
TITAN 13.5	13'6"	41.5"	14"	154 LBS.	178 LBS.	550 LBS.	1ST CLASS SEAT

*Titan Propel 13.5 is only available in Grey Goose and Hidden Oak

SLAYER propel



*Slayer 10 Max shown in Grey Goose



GATOR GREEN



HIDDEN OAK



GREY GOOSE

PERFORMANCE
SERIES

SPRINGBLADE
RUDDER SYSTEM

COMPATIBLE WITH:
SIDEKICK
ONBOARD WHEEL SYSTEM



SPECIFICATIONS	LENGTH	WIDTH	DEPTH	FITTED HULL	FULLY RIGGED	CAPACITY	OUTFITTING
SLAYER MAX 12.5	12'6"	34"	13"	95 LBS.	125 LBS.	500 LBS.	1ST CLASS SEAT
SLAYER MAX 10	10'	34.15"	14.65"	75 LBS.	97 LBS.	400 LBS.	1ST CLASS SEAT
SLAYER 10	10'	34"	13"	62 LBS.	81 LBS.	400 LBS.	FRAMED SEAT

*SLAYER PROPEL 10 DOES NOT COME WITH THE SPRINGBLADE RUDDER





SIT INSIDE & ACCESSORIES

ULTIMATE FX12



ULTIMATE FX15



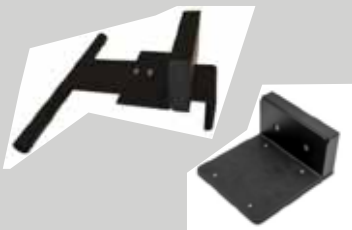
GATOR GREEN



GREY GOOSE



SPECIFICATIONS	LENGTH	WIDTH	DEPTH	FITTED HULL	FULLY RIGGED	CAPACITY	OUTFITTING
ULTIMATE FX 12	12'2"	30.5"	12.5"	60 LBS.	64 LBS.	350 LBS.	FRAMED SEAT
ULTIMATE FX 15 T	15'3"	31"	12.5"	80 LBS.	90 LBS.	600 LBS.	FRAMED SEAT



TRANSOM-STYLE MOTOR MOUNT

- AMOT002 - 14" Thwart Mount
- AMOT003 - 20" Thwart Mount

NEW - AMOT004 - Stern Mount

Compatible with the Titan 10.5/12, Slayer MAX 10/12.5, and Slayer XC

SKU

AMOT002

AMOT003

AMOT004



BOW MOUNT

NEW - AMOT005

Compatible with the Titan 10.5/12, Slayer MAX 10/12.5, and Slayer XC
Compatible with the Motorguide Xi3 quick release mount, Micro Powerpole, and much more.

SKU

AMOT005





ACCESSORIES

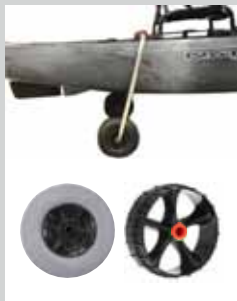


MIGHTY PADDLE CATCH

SKU

APAD140

- Mounts directly to the Groove Tracks. No Drilling required.
- Features 2 Yakattack Mighty Mounts and 2 paddle clips.
- Includes all hardware



SIDEKICK

-Ready to mount for easy transportation to and from the water

SIDEKICK No Float Wheel Kit

-Includes two no float wheels and two new pins required to fit the wheels on the existing Sidekick leg. Built to fit existing Sidekick systems for Native Watercraft.

SIDEKICK Sand Tire Kit

-Includes two 13.5" balloon tires, two new larger Sidekick legs, and two new pins. Built to fit existing Sidekick systems for Native Watercraft. *Available January 2023

SKU

ACAR023

AWHE010

AWHE020



ROD BUTT LAY OVER MOUNT SET

- Ready to mount on sidekick
- Includes all hardware

MODEL

SINGLE

DOUBLE

SKU

ABUT004

ABUT005



FIRST CLASS SEAT PACK

- Washable seat pack
- Contours to the First Class Seat
- Vertical side zip for easy access while seated
- Front has two mesh pockets for extra storage

SKU

APAC001



SEAT TOOL AND TACKLE ORGANIZER

-Fits Slayer Propel 10, Slayer Propel 13, Slayer 12, 14.5, and Ultimate FX Propel

SKU

ASTO005





ACCESSORIES



PROPEL SCUPPER PLUG

- For all models that accept a Propel Drive
- Fits directly into center drive scupper
- Reduces cavitation if using a motor
- AFOM 100 is compatible with all Slayers
- AFOM 200 is compatible with all Titans

SKU

AFOM100

AFOM200



TOURNAMENT RAIL TOOL AND TACKLE CADDY

- For Slayer Propel 10 and Slayer Propel 13
- Mounts on Groove Track
- Includes Hardware

SKU

ASTO012



CAM-LOK PADDLE HOLDER SET ASSEMBLY

- Locks-on all paddle shafts and rod ends
- Can be mounted to any Groove track with easy lock
- No tools needed to install, sold in pairs

SKU

APAD120



SUPER SEAL SCUPPER PLUG SET

- Fits Slayer Propel 10, Slayer Propel 13, Slayer 12/14.5
- Ultimate FX Propel, Slayer Max 10/12.5, Titan 10/12/13.5

SKU

APLG001



TITAN PROPEL 12 BOW HATCH BUCKET

- For Titan Propel 12
- Mounts inside bow hatch for easier storage

SKU

ABUC001





ACCESSORIES



NATIVE WATERCRAFT BRANDED KAYAK COVERS

- Includes straps for securing cover

MODEL	SKU
TITAN 10.5	ACOV001
TITAN 12	ACOV002
TITAN 13.5	ACOV003
SLAYER 10	ACOV004
SLAYER 12.5	ACOV006
SLAYER 10 M	ACOV007



HIGH FRAME SEAT

- 2" Higher seat upgrade

MODEL	SKU
TITAN, MAX, XC	ASEA030
SLAYER P 10,13	ASEA031



HI-PERFORMANCE RUDDER

- 25% more surface area than pre-2020 rudders for added control.
- Includes all needed hardware for installation.
- Aluminum Post Adds Stiffness.
- ARUD101 (Max 12.5) ARUD100 (All other models)

SKU
ARUD100
ARUD101



3-POCKET TOOL HOLDER

- Mounts to groove tracks on select Native kayak models.
- Includes hand-sewn tool holder, two thumb screws, and two slider slugs.

SKU
ASTO020



SEAT BACK TACKLE STORAGE

- Fits onto back of all Native Watercraft seats except Manta Ray Anglers

SKU
ASTO015





ACCESSORIES



PROPEL PEDAL DRIVE

SKU

APED040

- The Propel Pedal Drive can now be purchased separate of the Propel kayaks. Thwart bar not included.



PEDAL & CRANK ARM UPGRADE KIT

SKU

APRO013

- New pedals and new crank arms



PROPEL™ PROP INDEXER

SKU

APRO010

- The Propel indexer can quickly be engaged to allow for immediate propeller placement for lifting the propel drive back onto the deck in shallow waters.



MADE IN USA



PROPEL™ EASY CRUZ REPLACEMENT PROPELLER

SKU

APRO002

- Increased efficiency with no speed loss
- Power boat like sheer pin system to protect the blades from impact damage



MADE IN USA



KIT PROPEL LUBRICATION

SKU

AKIT001

- For recommended periodic maintenance of Propel crank
- Includes 3.5 oz. of Teflon lubricant, pump with extended nozzle and 3/16" allen key to access fill port





ACCESSORIES



CRANK SEAL REPLACEMENT KIT

- Includes 2 External Seals and 2 Internal Retaining Rings

SKU

APRO008



UPPER TRANSMISSION REBUILD KIT

- Includes Upper Gear Assembly, Bearings, Upper Transmission Gear
- Increases the efficiency and performance of well-used drives

SKU

APRO005



GEAR REPLACEMENT KIT

- For gear replacement only.
- Upper gear replacement kit APRO007
- Lower gear replacement kit APRO011
- Includes crank gear and upper/lower transmission gear

SKU

APRO007

APRO011



WEED GUARD/LOWER TRANSMISSION REBUILD KIT

- Includes propeller cartridge, bearings, lower transmission gear, and O-ring
- Increased efficiency with no speed loss
- Increases the efficiency and performance of a well used drive

SKU

APRO006



STEERING CONVERSION KIT, CORD (HMPE) LINE

- Rudder line replacement kit for converting to cordage from the metal cable.

SKU

ASTE001





ACCESSORIES



ULTIMATE FX 12 HATCH

- Sheds water
- Rigid Plastic that will not sag
- Thermoformed ABS
- Secured in place by cross-pattern bungee system

SKU

AHAT003



SUPER SEAL HATCH

- Injection molded out of super tough, flexible plastic with a durable rubber rim
- Easy to put on and take off
- Fits Manta Ray 12 and 14, Slayer Propel 10, Slayer 12 XC, and Titan Propel 10

SKU

AHAT005



TITAN 12, 13.5/SLAYER 14.5 HATCH

- Sheds water
- Rigid plastic that will not sag
- Thermoformed ABS
- Secured in place by cross-pattern bungee system

SKU

AHAT002



SLAYER 12/SLAYER PROPEL 13 HATCH

- Sheds water
- Rigid plastic that will not sag
- Thermoformed ABS
- Secured in place by cross-pattern bungee system

SKU

AHAT001



THUMB SCREWS

- Hardware and slider feet allows almost any gear to be mounted on the Groove accessory mounting system

SKU

ASCR001



GROOVE ADAPTER SLUGS KIT

- Replaces screws on groove track floating pad-eyes. Allows for adjustments without a screwdriver while on the water

SKU

APRO001



SLIDER KIT WITH PAD-EYE HOOK

- Hardware and slider feet allows almost any gear to be mounted on the Groove accessory mounting system

SKU

AGRO004



A fisherman wearing a blue cap and light blue shirt is seated in a black kayak on a river. He is holding a fishing rod that is bent, indicating a catch. A fishing net is visible in the water to the right, splashing. The background is a dense green forest.

 bonafide

GEORGIA BASSMASTER
MARSHALL STAMPS

ULTIMATE FISHABILITY

propelTM
pedal drive

HANDS FREE
— FORWARD TO REVERSE —

701 SERIES 10:1 GEAR RATIO **INTEGRATED WEED GUARD** TOUGH, MARINE GRADE
ANTI-SLIP PEDALS WITH REMOVABLE HEX TRACTION PINS **ANODIZED ALUMINUM**



MADE IN THE USA 
FROM DOMESTIC AND FOREIGN PARTS

5 YEAR
WARRANTY
ON PROPEL
DRIVES

Patent # 9725149



- 1 Blanks are designed and Manufactured in the USA
- 2 American made carbon fiber



- 3 Fuji K-Series Micro-Guides
- 4 Fuji movable Hook Keeper



- 5 Carbon Fore Grip Sleeve
- 6 Hyper Sensitive Carbon Reel Seat
- 7 Ergonomic EVA Rear Grip
- 8 Carbon Fighting Butt



- 9 Rod Action and Powers that are Technique Specific

BOSS

BASS Series



CASTING ROD SOCK

BFRSC RCS

SPINNING ROD SOCK

BFRSSRCA

CONVENTIONAL CASTING

Backed by Bonafide Limited Lifetime Warranty and Replacement Program

TYPE	LENGTH	POWER	ACTION	LINE	LURE WEIGHT
FROG	7'	HEAVY	FAST	30-80 LB BRAID	0-3/4
BFCRBS70FR					
WORM	7'2"	MEDIUM-HEAVY	FAST	14-25 LB	3/8-1
BFCRBS72WM					
SWIMBAIT	7'8"	MEDIUM-HEAVY	MODERATE-FAST	12-25 / 30-50 LB	1/2-3
BFCRBS78SW					
CHATTERBAIT	7'1"	MEDIUM-HEAVY	MODERATE-FAST	12-25 / 30-65 LB	1/2-1 1/2
BFCRBS71CB					
SQUAREBILL	7'	MEDIUM-HEAVY	MODERATE-FAST	10-20 LB	3/8-3/4
BFCRBS70SQ					
CRANKBAIT	7'	MEDIUM	MODERATE-FAST	6-14 LB	1/4-5/8
BFCRBS70CB					
SWIM JIG	7'3"	MEDIUM-HEAVY	FAST	12-25 / 30-65 LB	1/4-1 1/2
BFCRBS73SJ					
SPINNER BAIT	6'9"	MEDIUM	XTRA-FAST	8-14 LB	3/8-1/2
BFCRBS69SE					

SPINNING

WORM	7'2"	MEDIUM-HEAVY	FAST	8-12 LB	0-3/4
BFSRBS72WM					
NED RIG	7"	MEDIUM	FAST	6-12 LB	1/8-3/8
BFSRB70NR					

 **bonafide**



RVR119

- 1 RVR Seat with trim adjustment
- 2 Quiet anchor bow retraction and stern drag chain channels
- 3 Integrated Anchor Wizard pulley landings
- 4 Integrated Torqeedo throttle landing
- 5 Rudder capable footbrace landings (for motorizing)
- 6 Fully removable SS Pod system for sonar or storage
- 7 Full rod tip and rod butt organization for on water and for safe transport.
- 8 Bullwinkle Rod tip catch/organizer
- 9 Ketch board storage position
- 10 Ketch board safe spot measuring position
- 11 Multiple grab handle carrying positions
- 12 Multiple flush mount positions
- 13 Backpack capable 16x16 and 16 x13
- 14 Da Bomb and Tigthline capable
- 15 Garmin, Lowrance, Humminbird, Raymarine



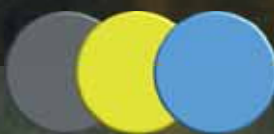
COMPATIBLE WITH:
SIDEKICK
ONBOARD WHEEL SYSTEM

Featuring:



HY-CAT HULL
Designed for Moving Water

- Built for stability and agility in river current conditions a deployment skeg for tracking.
- Built for deflection of rocks and waves in down river maneuvers.
- Wave deflection design for both bow and stern and a rapid draining deck.
- Built for attainment and ferrying in up river.
- Built for dragging and portage with twin skid plate stability



Available in Top Gun Grey,
Venom, Steel

ACCESSORY ADD-ONS

First ever integrated Bow/Stern anchoring design
with internal routed anchor lines
Torqeedo Battery storage and Mount plate
Sidekick compatible
Bow and stern storage bag capable for
overnight trips

NEW

RVR119	SKU
ANCHOR WIZARD SINGLE	AANC010
ANCHOR WIZARD DOUBLE	AANC011

 bonafide

P127

Featuring:

propel[™]
pedal drive 

- 1 Bow hatch with Doubleheader[™] hinges
- 2 Drop in bow storage bin
- 3 Fat Grip[™] bow handle / retractable stern handle
- 4 Integrated transducer protection and wire routing
- 5 YakAttack[®] Aluminum GearTrac[™]
- 6 Side carry handles
- 7 Omni Hook[™] stern tankwell tie-down system
- 8 Deck Traction Pads
- 9 Bow and stern mounting inserts
- 10 Stern Access Plate for hull access
- 11 Replaceable dual stern skid plates
- 12 Hi Rise XL Width seat
- 13 QuickDraw[™] rod stagers
- 14 Hand steering
- 15 Dual Rod Tip Covers
- 16 Rod holders
- 17 Scupper plugs



HY-CAT HULL

Maximum stability and tracking

NEW FEATURES

- 18 Under Seat Storage Bag
- 19 Added Deck Traction Pads



Length: 12' 7" • Width: 34" • Depth: 15.5" • Shot Weight: 100 lbs. • Fitted Weight: 120 lbs • Capacity: 475 lbs.

SPRINGBLADE
RUDDER SYSTEM



Available in Camo, Top Gun
Grey, Venom, Steel

COMPATIBLE WITH:
SIDEKICK
ONBOARD WHEEL SYSTEM 

SIDELINE



- 1 Water Resistant Material
- 2 Fishing Rod Holder
- 3 Water Bottle Pouch
- 4 Rubberized Handle
- 5 Magnetic Closure
- 6 Includes three 3600 Waterproof Tackle Boxes
- 7 Rubberized Pull Tabs
- 8 Snag Proof Side Pouches

- 9 Rigid Internal Structure
- 10 Chest and Waist Strap
- 11 Breathable Back Padding
- 12 Plier Pouch

- 1 Water Resistant Material
- 2 Breathable Back Padding
- 3 Water Bottle Pouch
- 4 Magnetic Closure
- 5 Mounts the back of any Bonafide Seat
- 6 Includes two 3500 Waterproof Tackle Boxes
- 7 Rubberized Pull Tabs
- 8 Includes Shoulder and Waist Strap

NEW

SIDELINE	SKU
BACKPACK	BFFBSLCM

SIDELINE	SKU
SLING	BFFBBPCM

bonafide



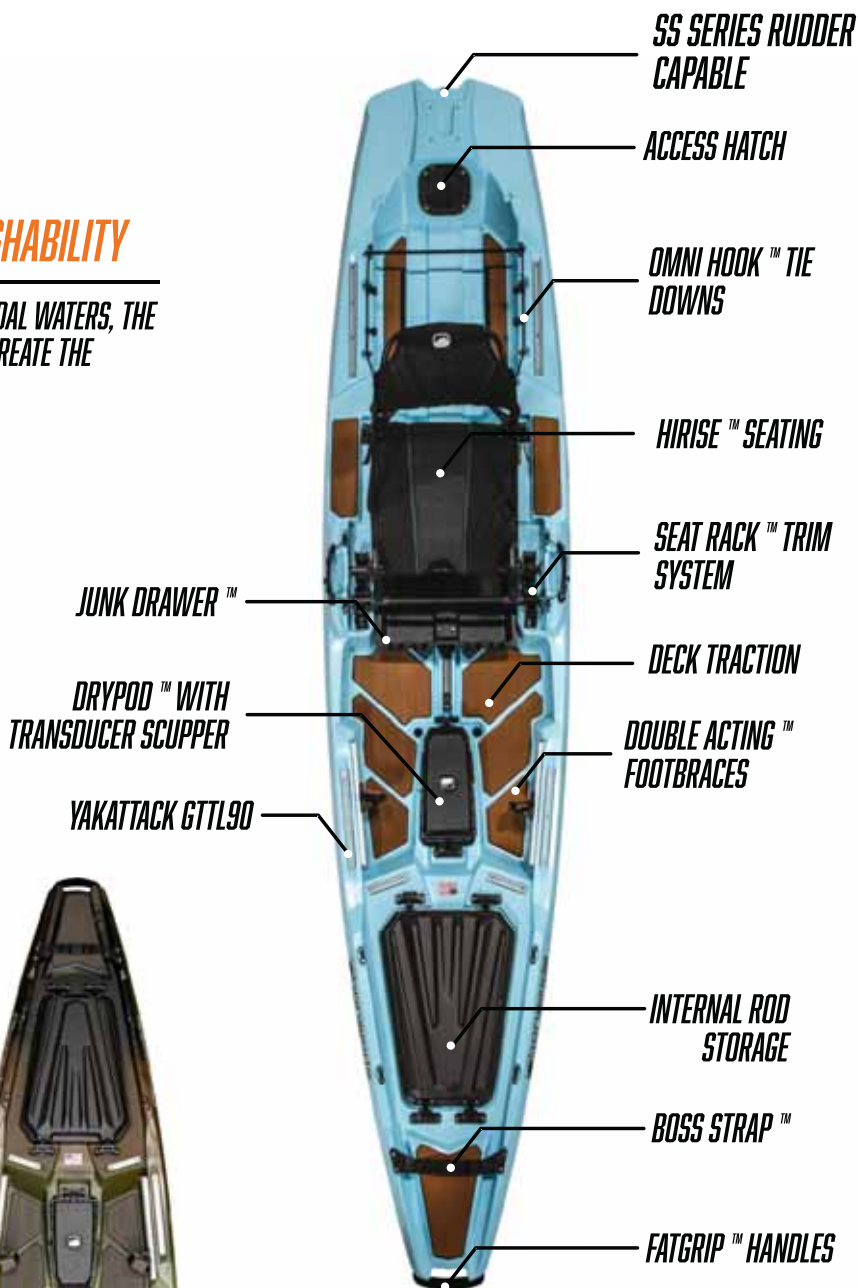
SPECS AND FEATURES

SS127 *ULTIMATE FISHABILITY*

WHETHER YOU FISH LAKES, RIVERS, OR TIDAL WATERS, THE BONAFIDE SS127 IS THE RIGHT KAYAK TO CREATE THE ULTIMATE FISHABILITY EXPERIENCE.

COLORS

-  TOP GUN GREY
-  VENOM
-  CAMO **NEW**
-  Show in STEEL **NEW**



MODEL	LENGTH	WIDTH	WEIGHT	CAPACITY	DECK HEIGHT
SS127	12'7"	33.75"	94 LBS.	475 LBS.	15.5"





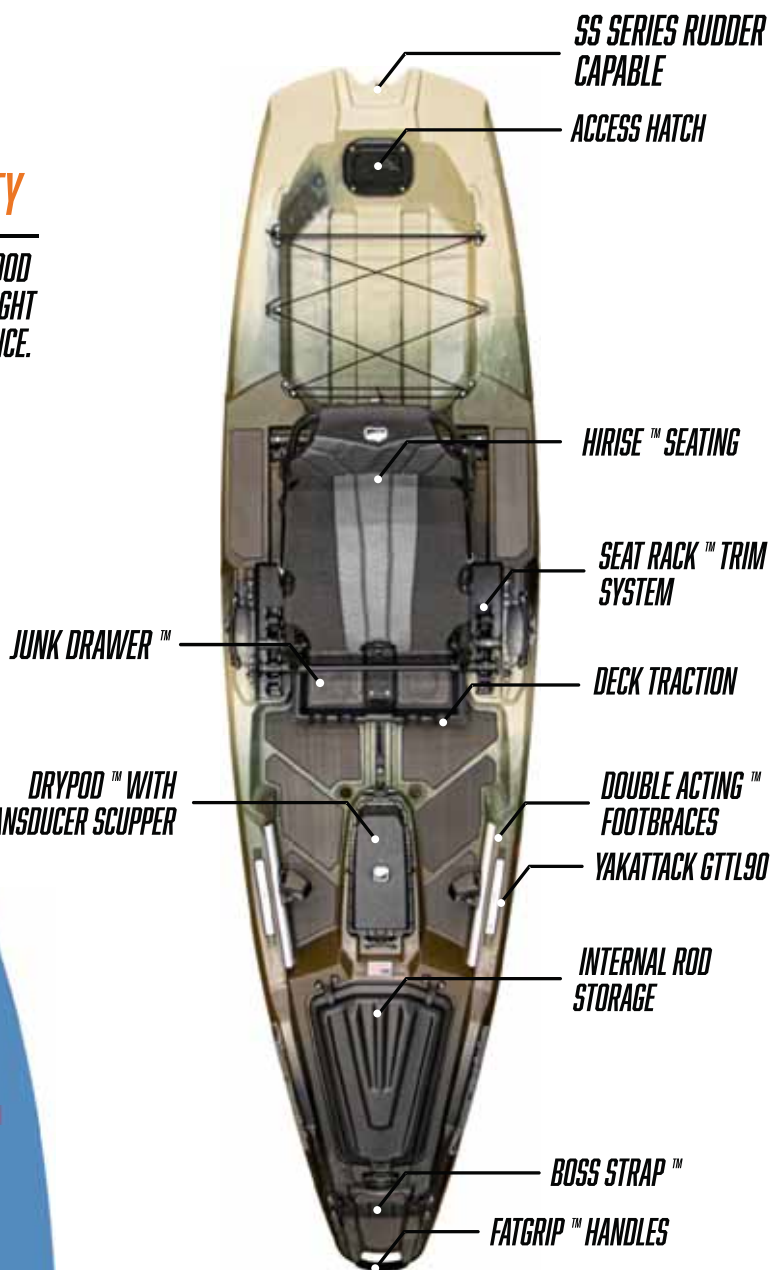
SPECS AND FEATURES

SS107 *ULTIMATE FISHABILITY*

WHETHER YOU FISH LAKES, RIVERS, OR A NEIGHBORHOOD POND, THE ULTRA PORTABLE BONAFIDE SS107 IS THE RIGHT KAYAK TO CREATE THE ULTIMATE FISHABILITY EXPERIENCE.

COLORS

- TOP GUN GREY
- VENOM
- Shown in CAMO **NEW**
- STEEL **NEW**



MODEL	LENGTH	WIDTH	WEIGHT	CAPACITY	DECK HEIGHT
SS107	10'7"	34.5"	84 LBS.	425 LBS.	15.5"

*STERN OMNI HOOKS AVAILABLE AS AN AFTERMARKET PURCHASE ON THE SS107
*SS107 FEATURES 2 YAKATTACK GTTL90 TRACKS AS OPPOSED TO 6 ON THE SS127





SPECS AND FEATURES

RS117

VALUE REDEFINED

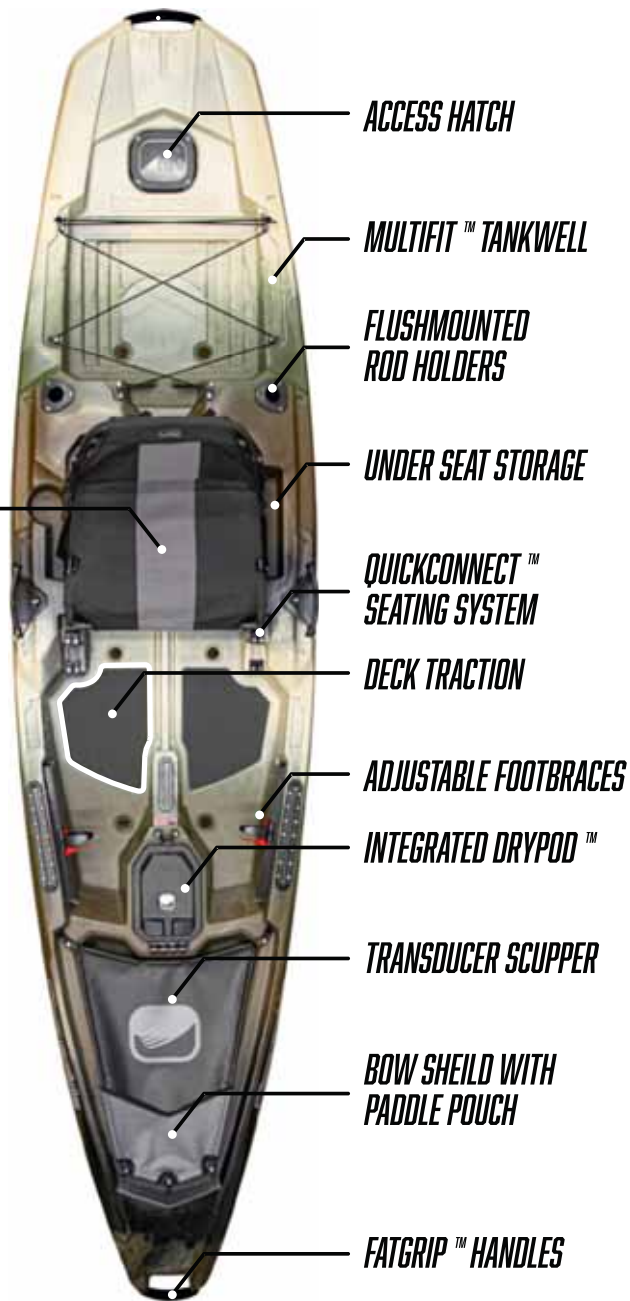
WHETHER YOU'RE TAKING THE FAMILY OUT ON THE LAKE FOR A DAY OF FUN OR FISHING AT YOUR SECRET HONEY HOLE, THE BONAFIDE RS117 OFFERS A PREMIUM EXPERIENCE AT AN AFFORDABLE PRICE.

COLORS

-  TOP GUN GREY
-  VENOM
-  Show in CAMO **NEW**
-  STEEL **NEW**



NEW
UPGRADED SEAT
INTEGRATED PADDING



MODEL	LENGTH	WIDTH	WEIGHT	CAPACITY	DECK HEIGHT
RS117	11'7"	33.5"	77 LBS.	425 LBS.	13"





SPECS AND FEATURES

EX123 *SUV OF KAYAKS*

WHETHER YOUR NEXT EXPEDITION TAKES YOU CAMPING, PADDLING, FISHING, OR JUST HAVING FUN WITH FRIENDS AND FAMILY, THE EX123 CAN GET YOU THERE.

COLORS

 Shown in TOP GUN GREY

 VENOM

 STEEL **NEW**



MODEL	LENGTH	WIDTH	WEIGHT	CAPACITY	DECK HEIGHT
EX123	12'3"	29.5"	67 LBS.	375 LBS.	15.5"





FEATURED ACCESSORIES

NEW

P127
UNDER SEAT BAG
UNDER SEAT TACKLE STORAGE
PROPEL SCUPPER PLUG

SKU
ASTO127
ASTO128
AFOM100



NEW

RVR119
ANCHOR WIZARD SINGLE
ANCHOR WIZARD DOUBLE

SKU
AANC010
AANC011



*Single kit includes 1 low profile Anchor Wizards and anchor ball

*Double kit includes 2 low profile Anchor Wizards and 2 anchor balls

NEW

TRANSPORTATION
P127/RVR SIDEKICK
SUSPENZ KAYAK CART
NO FLOAT WHEEL KIT
SAND TIRE KIT

SKU
ACAR024
ACAR040
AWHE10
AWHE20



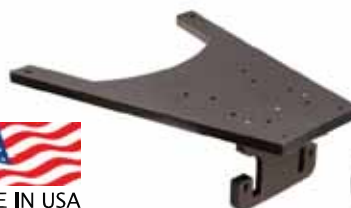
Sidekick No float wheel - Includes two no float wheels and two new pins required to fit the wheels on the existing Sidekick leg. Built to fit existing Sidekick systems for Native Watercraft.

Sidekick Sand Tire Kit - Includes two 13.5" balloon tires, two new larger Sidekick legs, and two new pins. Built to fit existing Sidekick systems for Native Watercraft.

NEW

MOUNTING
SS127 BOW MOUNT
MIGHTY PADDLE CATCH

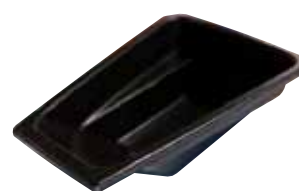
SKU
AMOT006
APAD140





FEATURED ACCESSORIES

STORAGE	SKU
JUNK DRAWER	1AC1-0015
JUNK DRAWER COVER	1AC1-0070
DRY POD	1AC1-0005
SS127 HATCH BUCKET	ABUC127



KAYAK COVERS	SKU
SS127/P127 STANDARD	ACOV127
SS127/P127 PRO	ACOVPRO127

*Allows for sidekick wheels, Power Pole mount, and Torqeedo mount to remain installed.

SS107	ACOV107
RS117	ACOV117
RVR	ACOV119



PERFORMANCE	SKU
SS STEERING KIT	1AC1-0066
SS RUDDER KIT	1AC1-0060
SS FLEX WINGS	1AC1-0064
RS/EX FLEX WINGS	1AC1-0082



A man and a woman are kayaking on a river. The man is in the front, wearing a black life vest and a baseball cap. The woman is in the back, wearing a blue life vest and a baseball cap. They are both smiling and holding paddles. The kayak is green and has the 'liquidlogic' logo on it. The background is a lush green forest with tall trees and some reeds in the foreground.

liquidlogic™

 LIFE ON THE WATER.
GOOD FOR THE SOUL



Liquidlogic™

RECREATIONAL SIT - INSIDE



SALUDA SERIES



SKU

AWHE001

WHEEL TAGALONG KIT

- Compatible with the Saluda 11/12 and Kiawah Series



NEW SALUDA

ORANGE SHARKBLUE VENOM

MODEL	LENGTH	WIDTH	WEIGHT	CAPACITY	OUTFITTING
11	11'	29.25"	43 lbs.	300 lbs.	FRAME SEAT
12	12'	29"	51 lbs.	300 lbs.	FRAME SEAT
14.5 T	14'6"	31"	65 LBS.	550 lbs.	FRAME SEAT



RECREATIONAL **SIT ON TOP**

KIAWAH SERIES



SKU

AWHE001

WHEEL TAGALONG KIT

- Compatible with the Saluda 11/12 and Kiawah Series



SKU

AKIT010

LX ACCESSORY KIT

Includes wheel kit and deck traction pads



NEW KIAWAH

ORANGE

SHARKBLUE

VENOM

MODEL	LENGTH	WIDTH	WEIGHT	CAPACITY	OUTFITTING
10.5	10'8"	32.5"	est 57 lbs.	325 lbs.	FRAME SEAT
12	12'2"	32"	est 65 lbs.	350 lbs.	FRAME SEAT



WHITEWATER



NEW RMX Shown in BLUE

 ORANGE  SHARK BLUE  VENOM

MODEL	LENGTH	WIDTH	COCKPIT LENGTH	COCKPIT WIDTH	WEIGHT	VOLUME	PADDLER WEIGHT	OUTFITTING
96	9'6"	27.25"	35.5"	21"	53 LBS.	96 GAL	160-260 LBS.	BADASS
86	9'4"	26.5"	35.5"	21"	51 LBS.	86 GAL	120-220 LBS.	BADASS

RECREATIONAL



MANTA RAY
propel



SIT ON TOP

ITS BACK FOR 2023!

MANTA RAY

 **SUBLIME**  **SUNBURST**

MODEL	LENGTH	WIDTH	WEIGHT	CAPACITY	OUTFITTING
PROPEL	12' 2"	33"	70 LBS.	325 LBS.	FRAME SEAT

PADDLE BOARD



VERSA BOARD

 **SHARK BLUE**  **VENOM**

MODEL	LENGTH	WIDTH	WEIGHT	CAPACITY	OUTFITTING
VERSA	12' 3"	33"	58 LBS.	300 LBS.	FOAM DECK PAD

SIT ON TOP



STINGRAY

 **SUNBURST***  **SHARK BLUE**  **VENOM**

MODEL	LENGTH	WIDTH	WEIGHT	CAPACITY	OUTFITTING
11.5	11' 6"	31.5"	60 LBS.	375 LBS.	FRAME SEAT
13.5 T	13' 6"	34"	80 LBS.	475 LBS.	FRAME SEAT

*Sunburst is only available for the 13.5 T



CROSSOVER

SIT ON TOP



COUPE XP

SHARK BLUE VENOM

MODEL	LENGTH	WIDTH	WEIGHT	CAPACITY	OUTFITTING
COUPE	10'	30"	50 LBS.	260 LBS.	PADDED SEAT
DEUCE	13'	33"	78 LBS.	500 LBS.	PADDED SEAT

SIT - INSIDE

REMIX XP

SHARK BLUE GOLD

MODEL	LENGTH	WIDTH	WEIGHT	CAPACITY	OUTFITTING
9	9'2"	26"	46 LBS.	220 LBS.	BADASS
10	10'3"	28"	49 LBS.	300 LBS.	BADASS

SIT - INSIDE

STINGER XP

SHARK BLUE GOLD

MODEL	LENGTH	WIDTH	WEIGHT	CAPACITY	OUTFITTING
XP	12'5"	24.25"	55 LBS.	300 LBS.	BADASS

WHITEWATER

ALPHA

SHARK BLUE GOLD

MODEL	LENGTH	WIDTH	COCKPIT LENGTH	COCKPIT WIDTH	WEIGHT	VOLUME	PADDLER WEIGHT	OUTFITTING
75	8'11"	25"	34.5"	20.5"	47 LBS. (21 kg)	75 GAL	100-200 LBS.	BADASS
90	9'2"	26.5"	35.5"	21.5"	50 LBS. (23 kg)	90 GAL	150-250 LBS.	BADASS

BRAAAP

SHARK BLUE GOLD

MODEL	LENGTH	WIDTH	COCKPIT LENGTH	COCKPIT WIDTH	WEIGHT	VOLUME	PADDLER WEIGHT	OUTFITTING
BRAAAP	8'11"	24.5"	34.5"	21.5"	44 LBS.	69 GAL	100-220 LBS.	BADASS
PARTY BRAAAP	8'11"	24.5"	34.5"	21.5"	44 LBS.	67 GAL	110-220 LBS.	BADASS

HOMESLICE

SHARK BLUE GOLD

MODEL	LENGTH	WIDTH	COCKPIT LENGTH	COCKPIT WIDTH	WEIGHT	VOLUME	PADDLER WEIGHT	OUTFITTING
HOMESLICE	7'7"	26"	34"	20.5"	32 LBS.	59 GAL	140-220 LBS.	BADASS





ACCESSORIES

SKU



WHEEL TAGALONG KIT

AWHE001

- Compatible with the Saluda 11/12 and Kiawah Series

SKU



NEW LIQUIDLOGIC UNDER SEAT STORAGE

ASTO030

- Manufactured by our in-house sewing team
- Compatible with the Saluda, Stingray 13.5, and Marvel



SKU



SUPER SEAL SCUPPER PLUGS

APLG001

- Creates a high pressure seal to keep water from entering scupper holes
- Low profile; can be modified to use a tether
- Sold in pairs

SKU



HIGH SEAT BACK REMIX XP

ASEA014

- Attaches to existing Remix XP seat to provide additional back support



SKU



MARVEL 12 SPORT CONSOLE

ACON12

- Features 8" dry hatch, 2 recessed storage trays, 2 water bottle holders with bungee, and 4" track system





ACCESSORIES



BULKHEAD UPGRADE KIT

- ABUL009 for Remix XP 9
- ABUL010 for Remix XP 10
- Convert the Remix XP Footpeg System to a whitewater bulkhead system for more support in whitewater conditions

SKU

ABUL009

ABUL010



2014 XP HATCH COVER

- Light weight and easy to install
- Fits any 2014 or Newer Remix XP model

SKU

AHAT005



SPEEDLOADER THROW BAG

- 50 feet of 5/16" smooth braid MFP with HT core

SKU

ATHR001



SEAT RISER PAD KIT

- The Riser Pad is 1/2" thick. The pad properly fits Bad Ass Outfitting in all whitewater models

SKU

APAD006





hurricane

Leaders in Lightweight



NEW

OSPREY 120



- New "Relax" Hull Design
- K-9 Comfort Pad
- Premium Open Floor Plan
- New Elevated Seat System with CamLock Security Knobs
- All new H-pod storage hatch
- Reinforced center scuppers

The Hurricane Osprey 120 has an innovative new hull shape that offers excellent efficiency along with superior tracking and stability. This new "Relax" hull is tuned to maximize your day on the water no matter whether it's your first kayak outing or you're practically a pro. With a premium open floor plan that features a large rear well and bow deck K-9 Comfort Pad, the Osprey 120 has space for all your gear and your dog too. It also features a new elevated seat system with CamLock Security knobs that keeps the seat firmly in place for extended paddling comfort. Our First Class Seat seamlessly integrates with this new system, placing you at a higher paddling point that allows you to stalk your prey (be it fish or just a fun day on the water) with confidence and security. The Osprey also boasts water bottle rests at the seat and room for large soft sided coolers in the tankwell, and our new H-pod gives you a handy gasketed storage spot in front of the seat for smaller items you want to keep close at hand. Side carry handles double as gear tracks, while reinforced center scuppers drain from the footwell and tank well to maximize your on-water fun. Check out the Osprey 120 and experience lightweight paddling at its finest.



SIT ON TOPS

	LENGTH	WIDTH	WEIGHT	CAPACITY	OUTFITTING
OSPREY 12	12'2	31.5"	42 lbs.	325 lbs.	1st Class Frame



NEW

TAMPICO 130

- Multi-chined for hull speed
 - Pronounced stern keel for straight-line paddling
 - Fore and Aft bungee
- All new H-pod storage hatch
 - New "Airstream Strongside" seat base
 - Bow and Stern deck lines
- Solid ABS bulkheads
 - Ample storage compartments bow and stern

The Hurricane Tampico 130 is an all new Performance Rec kayak with a retro name. Like the Tampico of yore, this 13-foot version paddles fast and straight, but this modern take also boasts a 26-inch beam for stability and superior cockpit comfort. At 36 inches long x 19 inches wide, the cockpit coaming works great with or without a sprayskirt, and our newly designed Airstream Strongside Seat offers solid deck reinforcement you are sure to swoon over. Just in front of the cockpit, our gasketed H-Pod is a handy place to store your phone and other small items, and with rubber hatches and solid bulkheads fore and aft, the Tampico 130 is a great day tripping or overnight camping kayak. Best of all, at 45 lbs, the Tampico 130 is simply lightweight paddling at its finest, so visit your Hurricane dealer and check one out today.



SIT ON TOPS	LENGTH	WIDTH	WEIGHT	CAPACITY	OUTFITTING
TAMPICO 130	13'	26"	45 lbs.	300 lbs.	Airstream Strongside

BLUE

MANGO



SIT INS

LENGTH

WIDTH

WEIGHT

CAPACITY

OUTFITTING



PRIMA 110 SPORT

11' / 335.5 cm

29" / 73.66 cm

41 lbs. / 18.60kg

325 lbs. / 147.42kg

1ST CLASS SEAT



AQUA



WASABI



BLUE



MANGO



PRIMA 125 SPORT

12'5" / 378.5 cm

29" / 73.66 cm

45 lbs. / 20.41kg

375 lbs. / 170.09kg

1ST CLASS SEAT



AQUA



WASABI



BLUE



MANGO



SANTEE 116 SPORT

SANTEE 116 SPORT

11' 6" / 350cm

28" / 71cm

36.5 lbs. / 16.6kg

300 lbs. / 136.1kg

AIRSTREAM SEAT BACK
W/ DELUXE SEAT PAD



AQUA



WASABI



BLUE



MANGO



SANTEE 126

SANTEE 126

12' 6" / 350cm

28" / 71cm

40 lbs. / 18.2kg

350 lbs. / 158.7kg

AIRSTREAM SEAT BACK
W/ DELUXE SEAT PAD



BLUE



MANGO



SANTEE 126 SPORT

SANTEE 126 SPORT

12' 6" / 381cm

28" / 71cm

39 lbs. / 17.7kg

350 lbs. / 158.7kg

AIRSTREAM SEAT BACK
W/ DELUXE SEAT PAD



AQUA



WASABI



BLUE



MANGO



SANTEE 140 TANDEM

SANTEE 140 TANDEM

12' / 472cm

31.5" / 80cm

57 lbs. / 25.9kg

425 lbs. / 192.8kg

AIRSTREAM SEAT BACK
W/ DELUXE SEAT PAD



BLUE



MANGO



SIT ON TOPS

LENGTH

WIDTH

WEIGHT

CAPACITY

OUTFITTING



SWEETWATER¹²⁶



SWEETWATER 126

SWEETWATER 126	12'6"	33" / 84cm	52 lbs. / 23.59kg	325 lbs. / 121.3kg	1st Class Frame
----------------	-------	------------	-------------------	--------------------	-----------------



BLUE



MANGO



SKIMMER 106	10' 6" / 320cm	32" / 81cm	39 lbs. / 17.1kg	315 lbs. / 143kg	DELUXE SEAT PAD
-------------	----------------	------------	------------------	------------------	-----------------



AQUA



WASABI



BLUE



MANGO



SKIMMER 116	11' 6" / 350cm	30.5" / 77cm	42 lbs. / 19.1kg	300 lbs. / 136.1kg	DELUXE SEAT PAD
-------------	----------------	--------------	------------------	--------------------	-----------------



AQUA



WASABI



BLUE



MANGO



SIT ON TOPS

LENGTH

WIDTH

WEIGHT

CAPACITY

OUTFITTING



SKIMMER 128

SKIMMER 128	12' 9" / 390cm	28" / 71cm	47 lbs. / 21.3kg	315 lbs. / 142.9kg	DELUXE SEAT PAD
SKIMMER 128 RUDDER READY	12' 9" / 390cm	28" / 71cm	47 lbs. / 21.3kg	315 lbs. / 142.9kg	DELUXE SEAT PAD
SKIMMER 128 W/ RUDDER	12' 9" / 390cm	28" / 71cm	50 lbs. / 22.7kg	315 lbs. / 142.9kg	DELUXE SEAT PAD



AQUA

WASABI

MANGO



SKIMMER 140 TANDEM

SKIMMER 140 TANDEM	14' / 472cm	33" / 83.8cm	65 lbs. / 29.5kg	425 lbs. / 192.8kg	DELUXE SEAT PAD
-----------------------	-------------	--------------	------------------	--------------------	-----------------



BLUE

MANGO

DAY TOURING

LENGTH

WIDTH

WEIGHT

CAPACITY

OUTFITTING



SOJOURN 135

SOJOURN 135	13' 5" / 411cm	24" / 61cm	45 lbs. / 20.4kg	275 lbs. / 124.7kg	AIRSTREAM SEAT BACK W/ DELUXE PAD
SOJOURN 135 RUDDER READY	13' 5" / 411cm	24" / 61cm	45 lbs. / 20.4kg	275 lbs. / 124.7kg	AIRSTREAM SEAT BACK W/ DELUXE PAD
SOJOURN 135 W/ RUDDER	13' 5" / 411cm	24" / 61cm	48 lbs. / 21.8kg	275 lbs. / 124.7kg	AIRSTREAM SEAT BACK W/ DELUXE PAD

*(LOW VOLUME) MODEL HAS A 1" LOWER DECK TO ACCOMMODATE SMALLER PADDLERS



BLUE

MANGO



SOJOURN 146

SOJOURN 146	14' 6"	24" / 61cm	47 lbs. / 21.32kg	275 lbs. / 124.7kg	AIRSTREAM SEAT BACK W/ DELUXE PAD
SOJOURN 146 RUDDER READY	14' 6"	24" / 61cm	47 lbs. / 21.32kg	275 lbs. / 124.7kg	AIRSTREAM SEAT BACK W/ DELUXE PAD
SOJOURN 146 W/ RUDDER	14' 6"	24" / 61cm	50 lbs. / 22.68kg	275 lbs. / 124.7kg	AIRSTREAM SEAT BACK W/ DELUXE PAD



BLUE

MANGO



ELEMENT2

Distribution in Europe:

Element 2 GmbH · Rudolf-Diesel-Str. 1 · D-24790 Schacht-Audorf

Telephone: +49 (0) 43 31/ 14 91 41 · E-Mail: info@element-2.de

www.element-2.de



@NATIVEWATERCRAFT_Deutschland



nativewatercraftdeutschland



@nativewatercraft_europe
@bonafidefishingeurope